



CAMDEN RIDGE OF CAROLINE

Minimum 2,800 square feet

<u>Lot #</u>	<u>Price</u>	<u>Lot #</u>	<u>Price</u>
226	58,500	248	61,500
227	58,500	249	61,500
228	59,000	250	59,000
229	59,000	251	SOLD
230	58,500	252	SOLD
231	59,000	253	59,000
232	59,000	254	58,500
233	58,500	255	58,500
234	58,500	256	59,000
235	58,500	257	59,000
236	58,500	258	59,000
237	59,000	259	59,000
238	61,500	260	61,500
244	59,000	261	61,500
245	61,500	262	61,500
246	61,500	264	61,500
247	61,500	265	59,000

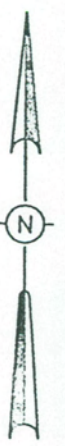
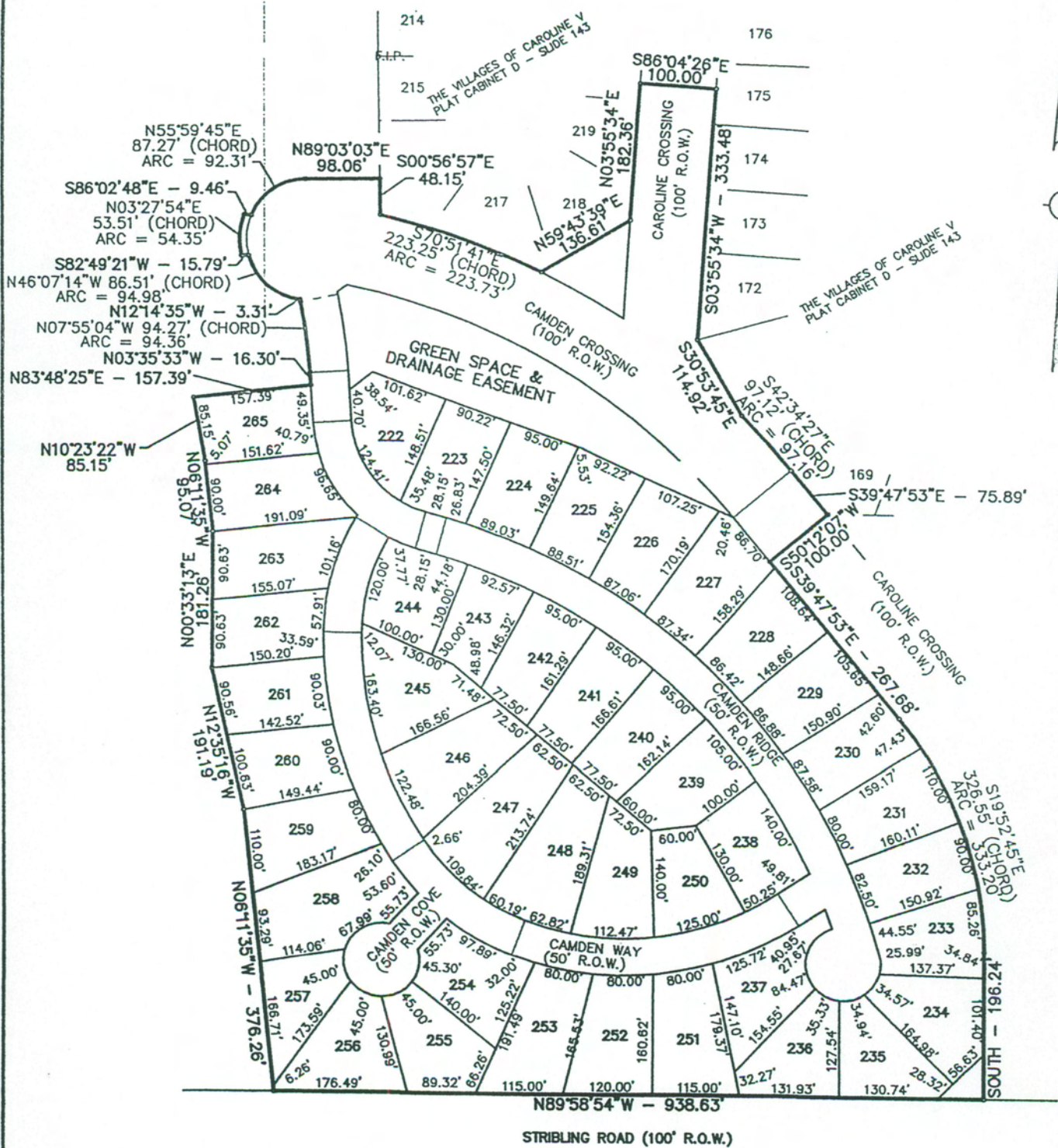
For more information please call 601-605-4458.

Lots subject to prior sale

Prices subject to change without notice

March 15, 2010

www.carolinems.com



CAMDEN RIDGE OF CAROLINE
 SITUATED IN THE
 SOUTHEAST 1/4 OF THE NORTHWEST 1/4, THE NORTHEAST 1/4
 OF THE SOUTHWEST 1/4, THE NORTHWEST 1/4
 OF THE SOUTHEAST 1/4, AND THE SOUTHWEST 1/4 OF THE NORTHEAST 1/4
 OF SECTION 14, TOWNSHIP 8 NORTH - RANGE 1 EAST
 MADISON COUNTY, MISSISSIPPI